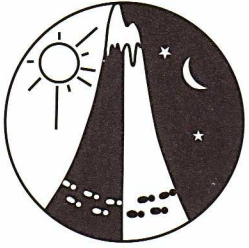


MAINPEAK State Championships
WARA Winter 2007 Rogaine
30th June - 1st July 2007

The Fairytale Rogaine

Western Australian Rogaining Association, PO Box 1201, Subiaco, WA, 6904



Setters & Veters

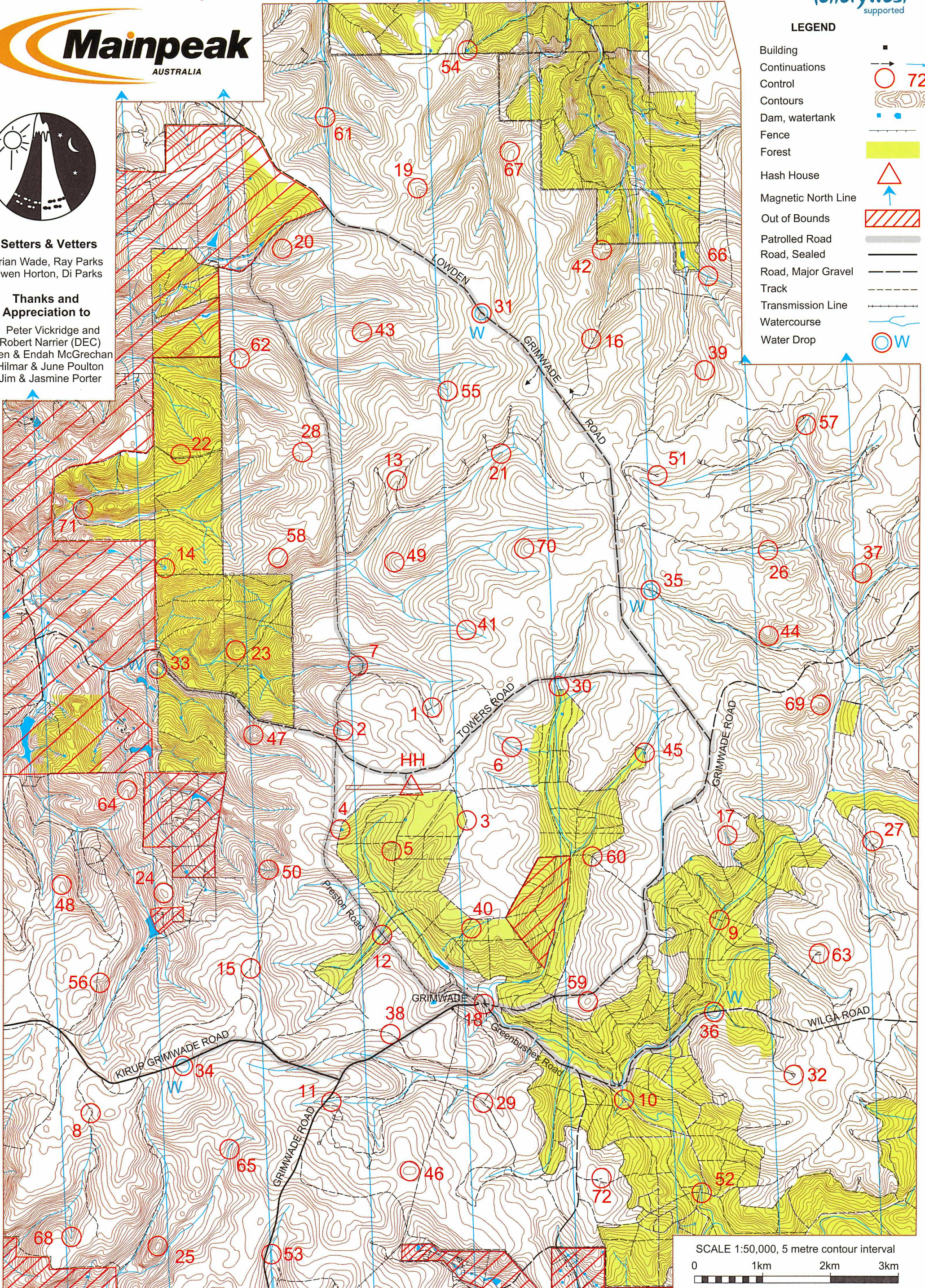
Brian Wade, Ray Parks
 Owen Horton, Di Parks

Thanks and Appreciation to

Peter Vickridge and Robert Narrier (DEC)
 Glen & Endah McGrechan
 Hilmar & June Poulton
 Jim & Jasmine Porter

LEGEND

- Building
- Continuations
- Control
- Contours
- Dam, watertank
- Fence
- Forest
- Hash House
- Magnetic North Line
- Out of Bounds
- Patrolled Road
- Road, Sealed
- Road, Major Gravel
- Track
- Transmission Line
- Watercourse
- Water Drop



SCALE 1:50,000, 5 metre contour interval
 0 1km 2km 3km

This map was produced using OCAD 9 by the Western Australian Rogaining Association, wa.rogaine.asn.au. Data supplied by DOLA and used under copy licence 393/93. Possession of this map does not give right of entry to this area

THE FAIRYTALE ROGAINE

MAINPEAK STATE CHAMPIONSHIPS

WARA Winter 24 Hour Rogaine 30 June - 1 July 2007

| No. | Description | Points | No. | Description | Points | Important Information |
|-----|--|--------|-----|---------------------------------------|--------|--|
| 1 | The track/watercourse crossing | 10 | 37 | The spur, broad, south east side | 50 | Control Cards From 1130 Saturday |
| 2 | The watercourse | 10 | 38 | The track bend, broad | 50 | |
| 3 | The track bend | 10 | 39 | The gully | 50 | Briefing 1145 Saturday |
| 4 | The "No 1" Water Tank | 10 | 40 | The watercourse, broad | 50 | |
| 5 | The gully | 10 | 41 | The watercourse, broad | 50 | |
| 6 | The watercourse | 10 | 42 | The saddle | 50 | Start 1200 Saturday |
| 7 | A log across the watercourse | 20 | 43 | The knoll, broad - western side | 60 | |
| 8 | The track bend | 20 | 44 | The spur, broad | 60 | Finish 1200 Sunday |
| 9 | The track/creek crossing, 30m @270 degrees | 20 | 45 | The dam, NE Corner, 25m @ 80 degrees | 60 | |
| 10 | The track/creek crossing | 20 | 46 | The knoll, broad | 60 | |
| 11 | The watercourse | 20 | 47 | The spur | 60 | Hash House Opens 1600 Saturday Closes 1300 Sunday |
| 12 | The northernmost track intersection, 10m @ 100 degrees | 20 | 48 | The knoll, broad | 60 | |
| 13 | The gully | 30 | 49 | The spur, broad | 70 | Sunset 1718 Saturday |
| 14 | The dam - south side | 30 | 50 | The watercourse | 70 | |
| 15 | The track bend | 30 | 51 | The logging turning circle, centre of | 70 | |
| 16 | The gully | 30 | 52 | The track/creek crossing | 70 | Sunrise 0721 Sunday |
| 17 | The watercourse | 30 | 53 | The watercourse | 70 | |
| 18 | The road intersection, 60m @ 210 degrees | 30 | 54 | The dam, north side | 70 | Moonrise 1648 Saturday |
| 19 | The gully | 40 | 55 | The watercourse | 80 | |
| 20 | The spur | 40 | 56 | The gully, broad | 80 | |
| 21 | The creek | 40 | 57 | The watercourse | 80 | Moonset 0802 Sunday |
| 22 | The knoll | 40 | 58 | The knoll, broad | 80 | |
| 23 | The knoll - western end | 40 | 59 | The knoll, broad, south side | 80 | Controls Used 72 |
| 24 | The knoll, broad | 40 | 60 | The track intersection | 80 | |
| 25 | The knoll | 40 | 61 | The watercourse junction | 90 | |
| 26 | The watercourse | 40 | 62 | The saddle | 90 | |
| 27 | The gully, broad | 40 | 63 | The logging turning circle, centre of | 90 | Patrolled Roads (Marked in grey on map) Kirup-Grimwade Road Lowden Grimwade Road Grimwade Road Greenbushes Road Wilga Road Preston Road Towers Road |
| 28 | The saddle, broad, on an unmarked road | 40 | 64 | The spur | 90 | |
| 29 | The track intersection | 40 | 65 | The watercourse | 90 | |
| 30 | The watercourse | 40 | 66 | The watercourse junction | 90 | 100 |
| 31 | The bend in the road, 50m @ 220 degrees (Water) | 50 | 67 | The spur, broad | 100 | |
| 32 | The logging turning circle, centre of | 50 | 68 | The watercourse, broad | 100 | 100 |
| 33 | The spur (Water) | 50 | 69 | The knoll | 100 | |
| 34 | A transponder tower, 50m @ 180 degrees (Water) | 50 | 70 | The spur, broad | 100 | 100 |
| 35 | The watercourse, broad / track crossing (Water) | 50 | 71 | A knoll on the spur | 100 | |
| 36 | The track/road junction, 40m @ 230 degrees (Water) | 50 | 72 | A firetower | 100 | 100 |
| | | | | | | |